



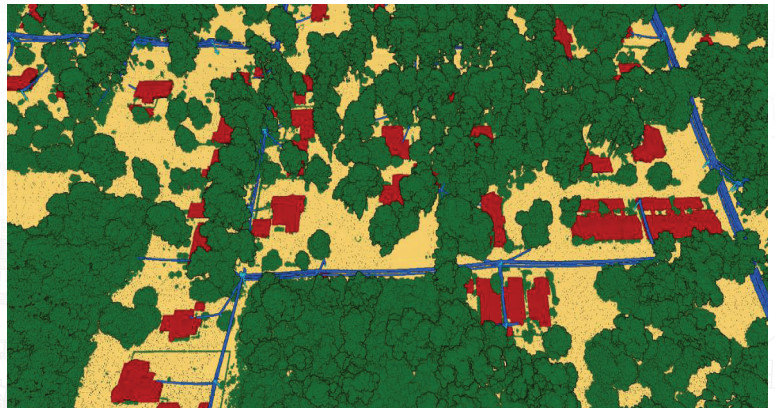
# WOOLPERT

**Woolpert** integrates industry expertise and artificial intelligence solutions to deliver accurate and current mapping content to utilities. As the global leader providing state-of-the-art geospatial data services, Woolpert's partnership with GSI offers innovative solutions for utilities, enhancing the distribution design process by streamlining route planning, joint use attachment workflows, and as-built reporting. By incorporating Woolpert's comprehensive LiDAR and imagery data into DDS, utilities can make more informed decisions and streamline the workflow for distribution designers.

## Geospatial Data Services

One of Woolpert's core competencies is bringing new geospatial data services to solve problems once thought impossible or too expensive.

- Aerial Imagery
- Remote Sensing
- LiDAR
- GIS Solutions
- Photogrammetry



## Woolpert's Specialities for Utilities

Woolpert outlines how to determine the location and condition of current assets and the creation of effective power delivery methods, while helping elevate technology and innovation for utilities. There is no limit to the analytic products that can be derived from this rich data.

- As-Built Reporting
- Joint Use Make Ready
- Asset Management
- LiDAR Classification
- Conflation

Powered by:

GeoSpatial  
Innovations, Inc.



### Contact Woolpert

- 👤 **Kristi Norman** — Utilities Market Director
- 📞 972-977-8758
- ✉️ [kristi.norman@woolpert.com](mailto:kristi.norman@woolpert.com)

Scan the code to learn  
more about **Woolpert** ➔

